





Kings Close, Puckeridge, Ware, SG11 1FG

****CHAIN FREE**** Westwood Leber is delighted to present to the market this beautifully presented two bedroom end of terrace home, constructed less than two years ago and benefitting from the remainder of its new build warranty. The property further benefits from a private driveway and is located within the exclusive Kings Close development in Puckeridge.

Situated within a quiet and desirable residential close comprising just seven homes, this exceptionally well presented two bedroom end of terrace property offers stylish, turnkey accommodation within the heart of Puckeridge. The intimate scale of the development provides a more private and peaceful setting when compared to larger new build estates, making it particularly appealing to first-time buyers, downsizers, and investment purchasers.

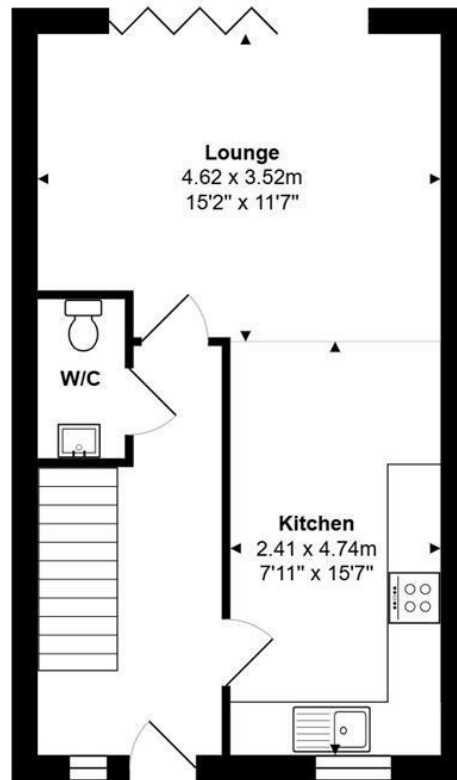
The ground floor features a welcoming entrance hall, a contemporary fitted kitchen finished with quartz worktops and ample storage, and a bright, well-proportioned lounge. Bifold doors open seamlessly onto the rear garden, creating an excellent sense of space and light while providing an ideal indoor-outdoor connection to the generous rear garden.

To the first floor, the property offers a master bedroom with en-suite shower room, a further double bedroom, and a sleek, modern family bathroom. Storage has been thoughtfully incorporated throughout the home, enhancing practicality without compromising the clean, modern design.

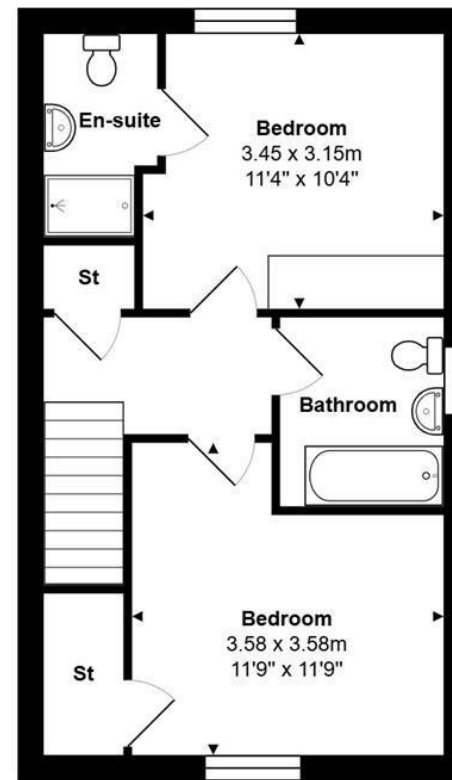


WESTWOODLEBER

WESTWOODLEBER
LET US GUIDE YOU HOME



Ground Floor



First Floor

Total Area: approx. 76.1 m² ... 819 ft²

THE FLOORPLAN IS FOR ILLUSTRATIVE PURPOSES ONLY AND IS NOT TO SCALE.
Measurements and features are approximate and may differ from the actual property. Verify all details independently; no liability is accepted for errors or omissions.

Property marketing provided by www.fotomarketing.co.uk











